



**WSO**

WORLDWIDE SECURITY OPTIONS

# **EXECUTIVE PROTECTION**

Protecting those traveling in a dangerous world.

Your Smart Decision.



**WSO Worldwide Security Options** provides temporary and permanent executive protection services for high value individuals in every sector: corporate, private, industrial and government. We have a track record of success in planning, coordinating and executing protection services of individuals and their families throughout the world.



[www.wso-security.com](http://www.wso-security.com)

✉ [info@wso-security.com](mailto:info@wso-security.com)





# WSO

WORLDWIDE SECURITY OPTIONS

## Duty of care

Organizations have a legal obligation to minimize the risk of injury, and exposure to situations that potentially affect the health and security of an employee during working hours. For instance, if an executive takes a business trip to a high-risk region, the company is legally obligated to ensure the individual is protected. Organizations can be liable for damages if they do not take adequate steps to provide security for their staff abroad.

How WSO  
protects your  
people

We have developed stringent security risk management protocols that meet the legal obligation for **"duty of care"** to ensure your employees are protected throughout their business travels. If you provide executive protection services through **WSO**, your organization will not be liable for damages because you have met the requirements for **"duty of care"**.

In the United States alone, there are over 1 million business trips taken each day. While businesses expand their operations globally, there will be an increase in international business travel. As companies access new global markets and opportunities, they increase the exposure to security risks for their employees.

If your company sends employees abroad for work purposes, their security should be your top priority. If your organization has not discussed appropriate **"duty of care"** measures to ensure the security of your staff while working internationally – now is the time. We are qualified and prepared to assist your organization in establishing reasonable **"duty of care"** guidelines to ensure your staff and your company is protected.

## Our Promise

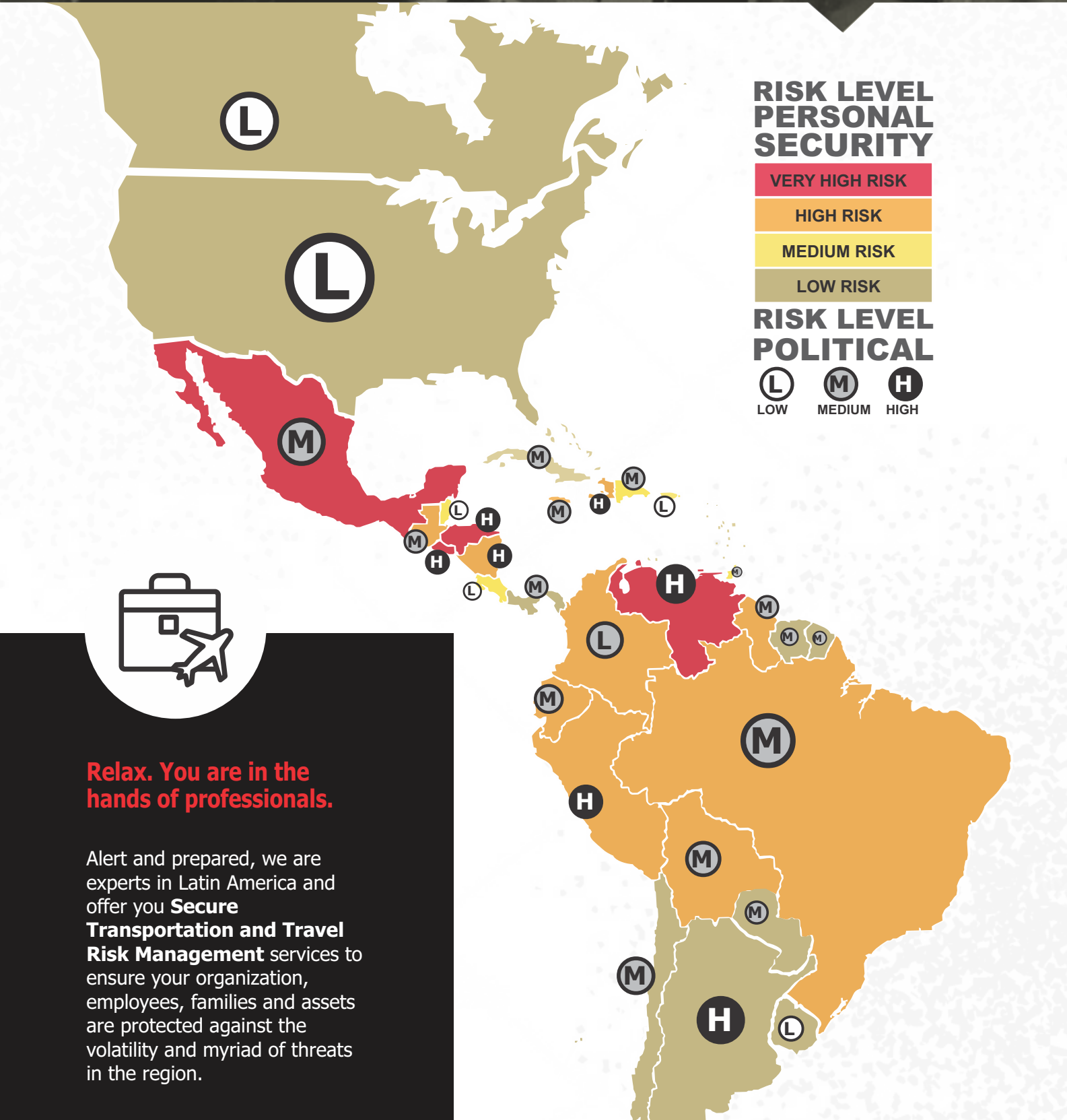
**WSO** helps companies navigate the moral and legal responsibilities of protecting employees, families, contractors and any other individuals working with the company. These situations are difficult, and we are trained to help you and your organization implement rigorous **"duty of care"** procedures. When you work with **WSO** you can be confident you did everything possible to ensure the well-being and security of your team working in international and remote locations.

## Safe Travels

**WSO** specializes in travel risk management, which includes executive protection, secure transportation, route and schedule monitoring, medical assistance, emergency response, crisis management and evacuation planning. **WSO** uses state-of-the-art technology, risk mapping, training, regional expertise and our vast security experience to ensure you are protected during your business trip.

# Risk Map

TRAVELERS | 2020 -2021



**Relax. You are in the hands of professionals.**

Alert and prepared, we are experts in Latin America and offer you **Secure Transportation and Travel Risk Management** services to ensure your organization, employees, families and assets are protected against the volatility and myriad of threats in the region.



# WSO

WORLDWIDE SECURITY OPTIONS

## Ipsos-MORI Stats

Ipsos-MORI, the British market research company published, a global survey of companies responsible for the design and implementation of travel risk management services. Below are their findings:



predict an increase in travel linked risks in the coming years



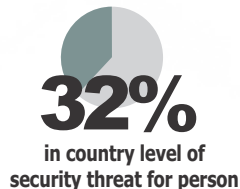
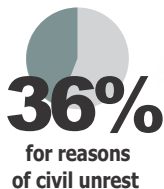
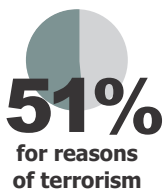
Note there has been a rise in risk in Latin America recently



Report a surge in risk management investments related to travel in the last year



Report they had to modify their travel itinerary for security related reasons:



# Latin América: the most violent region of the world

According to the annual report of the Citizen Council for Public Security and Criminal Justice of Mexico (CCSPJP), 40 of the 50 most violent cities in the world, excluding cities in active war zones, are in Latin America and the Caribbean. Furthermore, the Igarapé Institute of Brazil reported of the 20 countries with the highest homicide rates in the world, 14 are in Latin America and the Caribbean.

8% of the world population resides in Latin American and the Caribbean, yet, the region is responsible for 33% of the world's homicides. The only country with 5 cities in the top 10 most dangerous cities, is Mexico, with Tijuana placing as the most violent city in the region, with 138.26 murders for every 100,000 individuals. Second, is the Mexican city of Acapulco with 110.50 killings and third is Caracas of Venezuela with 99.98 homicides per 100,000 inhabitants.

## The 10 Most Dangerous Cities

According to the CCSPJP Annual Report.

1. Tijuana, Mexico (138.26)
  2. Acapulco, Mexico (110.50)
  3. Caracas, Venezuela (99.98)
  4. Ciudad Victoria, Mexico (86.01)
  5. Ciudad Juárez, Mexico (85.56)
  6. Irapuato, Mexico (81.44)
  7. Ciudad Guayana, Venezuela (78.30)
  8. Natal, Brasil (74.67)
  9. Fortaleza, Brasil (69.15)
  10. Ciudad Bolívar, Venezuela (69.09)
- (Homicides per every 100,000 inhabitants)



# GLOBAL COMMAND CENTER

## Emergency Response

Our Global Command Center is the core of our operations. This is where we plan, organize, direct, coordinate our response in a crisis event. Our 24/7 Global Command Center uses state-of-the-art equipment, software and hardware systems to protect our clients. We use video surveillance, GPS monitoring,

WSOTrack® and other specialized tools to monitor in real time your security 24/7 365 days. Each event is evaluated by our experts certified in security protocols and risk management to ensure every situation that arises is addressed and responded to in the most effective manner possible.



## Situation Room

We employ technology, human talent and the DMAIC (Define, Measure, Analyze, Improve, Control) framework along with clear and proven procedures in our approach to risk management and executive protection. As a result, our situation rooms allow us compile statistics, classified information and on the ground intelligence so that we can effectively evaluate, analyze and act in the best interest and security of our clients.

We work alongside



# 15 REASONS WSO IS YOUR SMART DECISION IN Executive Protection



# WSO

WORLDWIDE SECURITY OPTIONS

EXCELLENCE

- 1** We provide dynamic protection options for any situation: on foot, on the move, for events, transport in vehicles, caravans or other means of transportation.
- 2** We are a team of specialists trained in the latest techniques of evasive driving, personnel protection and emergency response.
- 3** We have the technological and management infrastructure through our 24/7 Global Command Center to manage travels and provide rapid response to every situation.
- 4** We personalize and tailor every service in accordance with needs of the clients and the demands of the operational environment
- 5** We continually assess the threats and risks in every location we operate to ensure we provide the best protection and response.
- 6** Our specialists handle all planning, intelligence, counterintelligence, prevention, protection, reaction and evacuation for our clients and families.
- 7** We test run every route, and perform preliminary reconnaissance to ensure every trip goes according to plan
- 8** Our pricing includes vehicles and back-up personnel (without elevation of mission profile) to eliminate an increase in risk exposure or inconvenience to the executive during their trip.
- 9** We handle our clients needs efficiently and with urgency regardless of status. No bureaucracy, no wasted time.
- 10** Our vehicles, staff and clients use cutting edge GPS technology with coverage throughout the Americas. You are secure wherever you find yourself on the continent.
- 11** We guarantee excellence from start to finish of the objective. We employ the most advanced methods of process management, real-time assistance and step-by-step execution of executive protection by professional security specialists.
- 12** We have agreements and ties with public and private security organizations for emergency and incident responses.
- 13** We have agreements with hospitals and private clinics in each city for the medical assistance of our executives regardless of whether they have insurance
- 14** Our vehicles are modern, designed for your comfort and equipped to meet your every need.
- 15** Our vehicles possess shield certification, first aid kits and accessories for road safety and emergencies. As well, they are part of a comprehensive maintenance programs, and have passenger insurance.